



PROPOSED STUDY PLAN (TWO YEARS OF COMPLETION)

Year 1 Semester 1

• Socio-political context of education & rehabilitation for people with disability	Core
• Research methods & data analysis	Compulsory

Year 1 Semester 2

• Recent advances in rehabilitation for people with developmental disabilities	Core
• Sensory & motor intervention for people with developmental disabilities	Core
• Selection of an elective subject	Elective

Year 2 Semester 1

• Psychosocial rehabilitation for people with developmental disabilities	Core
• Project study	Compulsory

Year 2 Semester 2

• Case management of people with developmental disabilities	Core
• Selection of an elective subject	Elective

ADMISSION REQUIREMENTS

- Bachelor's degree in occupational therapy, physiotherapy, speech therapy, nursing, social work, education, psychology or related professional degrees, or the equivalent; preferably with one year of working experience with people with developmental disabilities; or
- Professional Diploma in a related rehabilitation field from a recognized institution or equivalent; with two years of working experience with people with developmental disabilities.

ENQUIRES

For general information:

Ms. Gloria Man
Tel : + 852 2766 4394
E-mail: rsdept@inet.polyu.edu.hk

For academic matters:

Dr. Karen Liu
Tel: + 852 2766 4801
E-mail: Karen.liu@inet.polyu.edu.hk

For more information about the programme, please visit:

<http://www2.rs.polyu.edu.hk/rs/main/postgraduates.aspx>

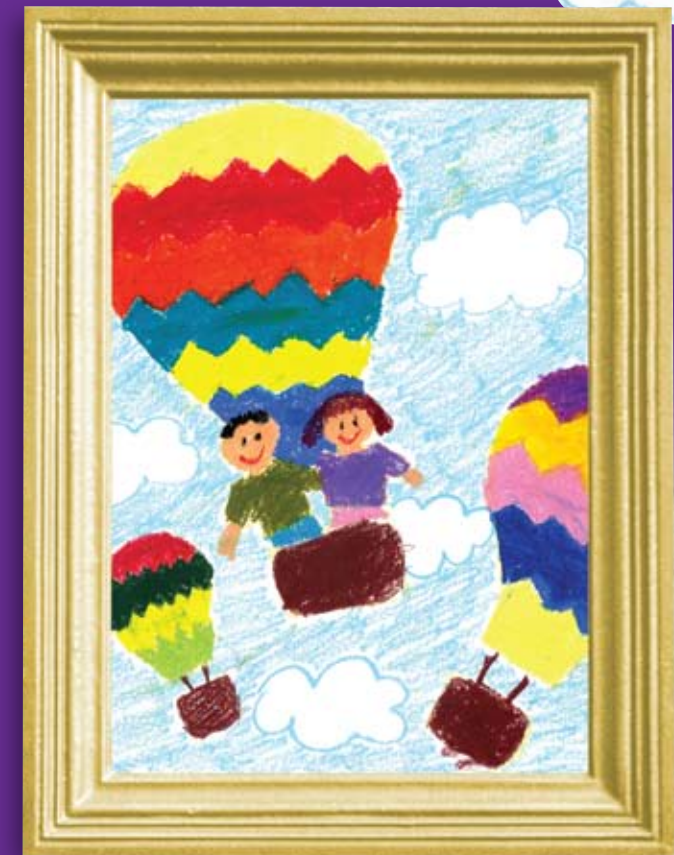
Remark :

The artwork was drawn by Yeung Chi Kit, Hilary, a child with specific learning disabilities.



Master of Science in Rehabilitation of People with Developmental Disabilities

發展障礙人士復康 理學碩士學位



Application of Admission: September 2010





This Award aims to equip students with advanced knowledge in the field of developmental disabilities and to enable them to develop attitudes and qualities appropriate for independent and partnership professional practice for people with developmental disabilities.

UNIQUE FEATURES

Studies are multi-disciplinary and students are selected from different professional backgrounds sharing an interest in working with people with developmental disabilities. The teaching team includes multi-disciplinary members such as occupational therapists, physiotherapists, speech therapists, educators, social workers, psychologists. The programme's multi-disciplinary nature not only advances your knowledge of professional practice, but also expands your perspective in the field of rehabilitation.

General topics include:

- Evidence-based clinical practice
- Inter-disciplinary team approach
- Clinical research with state-of-the-art facilities

Scholarships of HK\$15,000 are offered for students with excellent academic achievement.

CORE SUBJECTS*

Socio-Political Context of Education and Rehabilitation for People with Disability

Examine the socio-cultural and political factors that may impact on the education and rehabilitation for people with developmental disabilities.

Psychosocial Rehabilitation for People with Developmental Disabilities

Provide students with current knowledge in the psychosocial interventions for people with developmental disabilities.

Sensory and Motor Intervention for People with Developmental Disabilities

Enable students to critically evaluate the current theoretical framework, as well as sensory and motor intervention strategies in promoting the health and well-being of people with developmental disabilities.

Recent Advances in Rehabilitation for People with Developmental Disabilities

Provide the opportunities for students to integrate scientific knowledge and research evidence of the new intervention approaches for the management of people with developmental disabilities.

Case Management of People with Developmental Disabilities

Facilitate students to have an in-depth understanding of a particular diagnosis of developmental disabilities through case management and extensive literature review.

* Subject to changes

A number of elective subjects are available within the Postgraduate Scheme in Rehabilitation Sciences. Some examples are:

- Developmental Issues in Children With and Without Disabilities
- Theories and Practice of Counseling for Rehabilitation and Health Professionals
- Vocational Rehabilitation
- Psychometric Theories and Practice
- Advanced Statistical Methods for Health and Social Research

For the Project Study (group or individual work), students are encouraged to select a topic relevant to their professional and personal interests.

CORE TEACHING TEAM

Dr. Vinci Cheung
Dr. Kenneth Fong
Prof. Cecilia Li
Dr. Dora Poon
Dr. Karen Liu (Award Coordinator)

Experts in the field of developmental disabilities will be invited as guest speakers.

APPLICATION

Application for September 2010 admission:

For non-local applicants: From 20 October 2009

For local applicants: From 15 December 2009

Initial deadline: 1 March 2010

Applicants may visit <http://www.polyu.edu.hk/study/> for details.